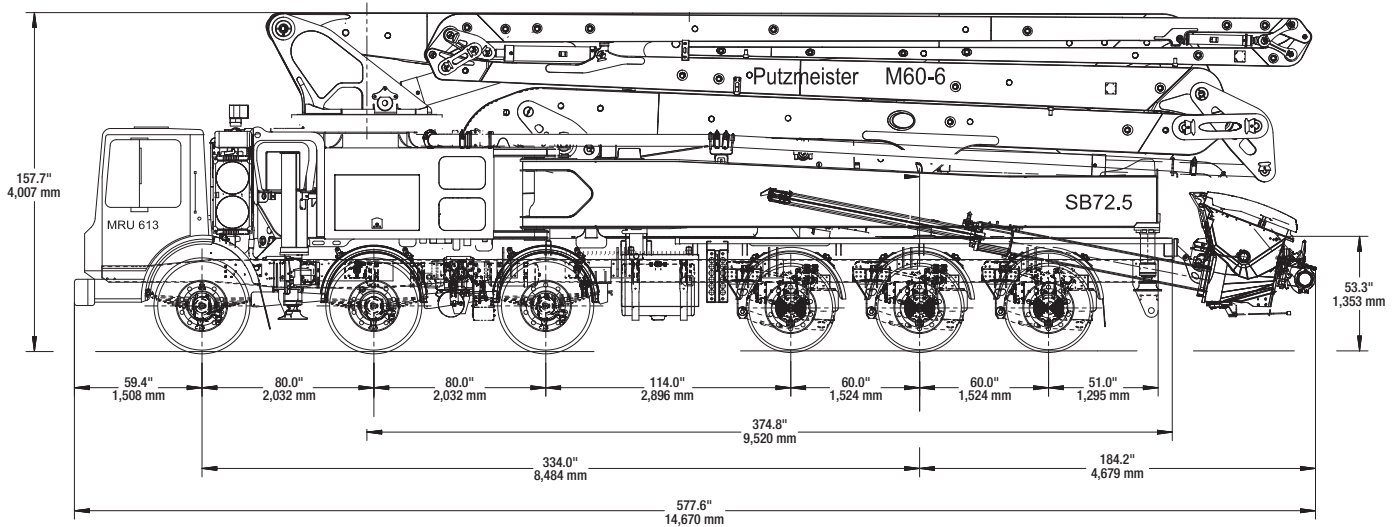


# 60Z-Meter Truck-Mounted Specifications

## Machine Dimensions

	Imperial	Metric
Length	48' 2"	14.67 m
Width	8' 2"	2.50 m
Height	13' 2"	4.00 m
Wheelbase	334"	8,484 mm



Based on Model BSF60-6.17/19 iLS  
MACK 126R 12x6/334.

Dimensions will vary with different truck  
makes, models, and specifications.

Weights are approximate and include  
pump, boom, truck, driver, and full fuel  
tank. Varies with options selected.

Maximum theoretical pump values listed.

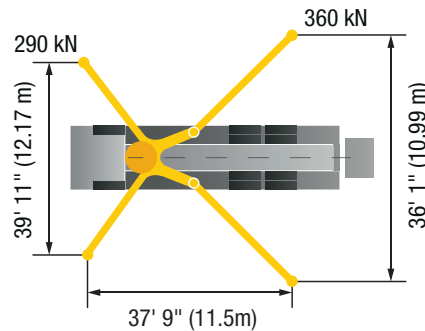
\* Applies to units mounted on a PMA  
stock truck - Mack 126R 12x6/334.

- Standard delivery line system rated at  
max line pressure of 1,233 psi (85 bar)

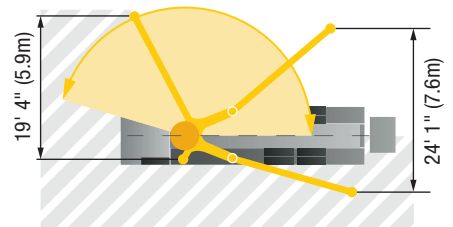
## Outrigger Spreads

	Imperial	Metric
Front — L - R   hydraulically extended out & down	39' 11"	12.17 m
Rear — L - R   hydraulically swing out & extend down	36' 1"	10.99 m

### Standard



### One-Side Support (OSS)



## Weight

	Imperial	Metric
Front axle weight	53,780 lbs	24,394 kg
Rear axle weight	53,540 lbs	24,286 kg
Approximate total weight	107,320 lbs	48,680 kg

### Boom

Roll-Z-folding Design      Imperial      Metric

#### Height & Reach

Vertical reach	194' 3"	59.20 m
Horizontal reach	177' 10"	54.20 m
Reach from front of truck*	167' 0"	50.90 m
Reach depth	144' 8"	44.10 m
Unfolding height	42' 8"	13.00 m

#### 6-Section Boom

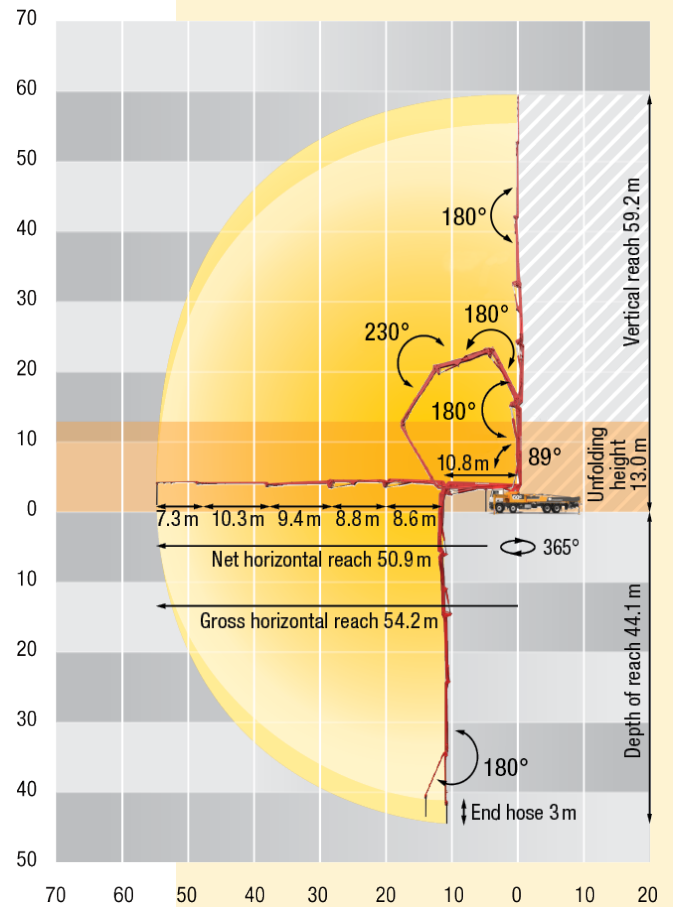
1 <sup>st</sup> section articulation	89°
2 <sup>nd</sup> section articulation	180°
3 <sup>rd</sup> section articulation	180°
4 <sup>th</sup> section articulation	230°
5 <sup>th</sup> section articulation	180°
6 <sup>th</sup> section articulation	180°

1 <sup>st</sup> section length	35' 5"	10.80 m
2 <sup>nd</sup> section length	28' 3"	8.60 m
3 <sup>rd</sup> section length	28' 10"	8.80 m
4 <sup>th</sup> section length	30' 10"	9.40 m
5 <sup>th</sup> section length	33' 10"	10.30 m
6 <sup>th</sup> section length	23' 11"	7.30 m

#### General Specifications

	Imperial	Metric
Pipeline Size (ID) metric ends	5"	125 mm
Rotation	365°	
End hose — length	10' 0"	3.00 m
End hose — diameter	5"	125 mm

### Range Diagram



### Pump

		60Z.17 iLS		60Z.19 iLS	
		Imperial	Metric	Imperial	Metric
Output	Rod side	—	—	—	—
	Piston side	222 yd <sup>3</sup> /hr	170 m <sup>3</sup> /hr	254 yd <sup>3</sup> /hr	194 m <sup>3</sup> /hr
Pressure	Rod side	—	—	—	—
	Piston side	1,233 psi	85 bar	1,233 psi	85 bar
Material cylinder diameter		10"	250 mm	10"	250 mm
Stroke length		83"	2,100 mm	83"	2,100 mm
Maximum strokes per minute	Rod side	—	—	—	—
	Piston side	—	28	—	31
Volume control		—	0-Full	—	0-Full
Vibrator		—	Standard	—	Standard
Hard-chromed material cylinders		—	Standard	—	Standard
Hydraulic system		—	Free Flow	—	Free Flow
Hydraulic system pressure		5,075 psi	350 bar	5,075 psi	350 bar
Differential cylinder diameter		4.5"	115 mm	4.5"	115 mm
Rod diameter		3.1"	80 mm	3.1"	80 mm
Maximum size aggregate		2.5"	63 mm	2.5"	63 mm
Water tank — pedestal		185 gal	700 L	185 gal	700 L